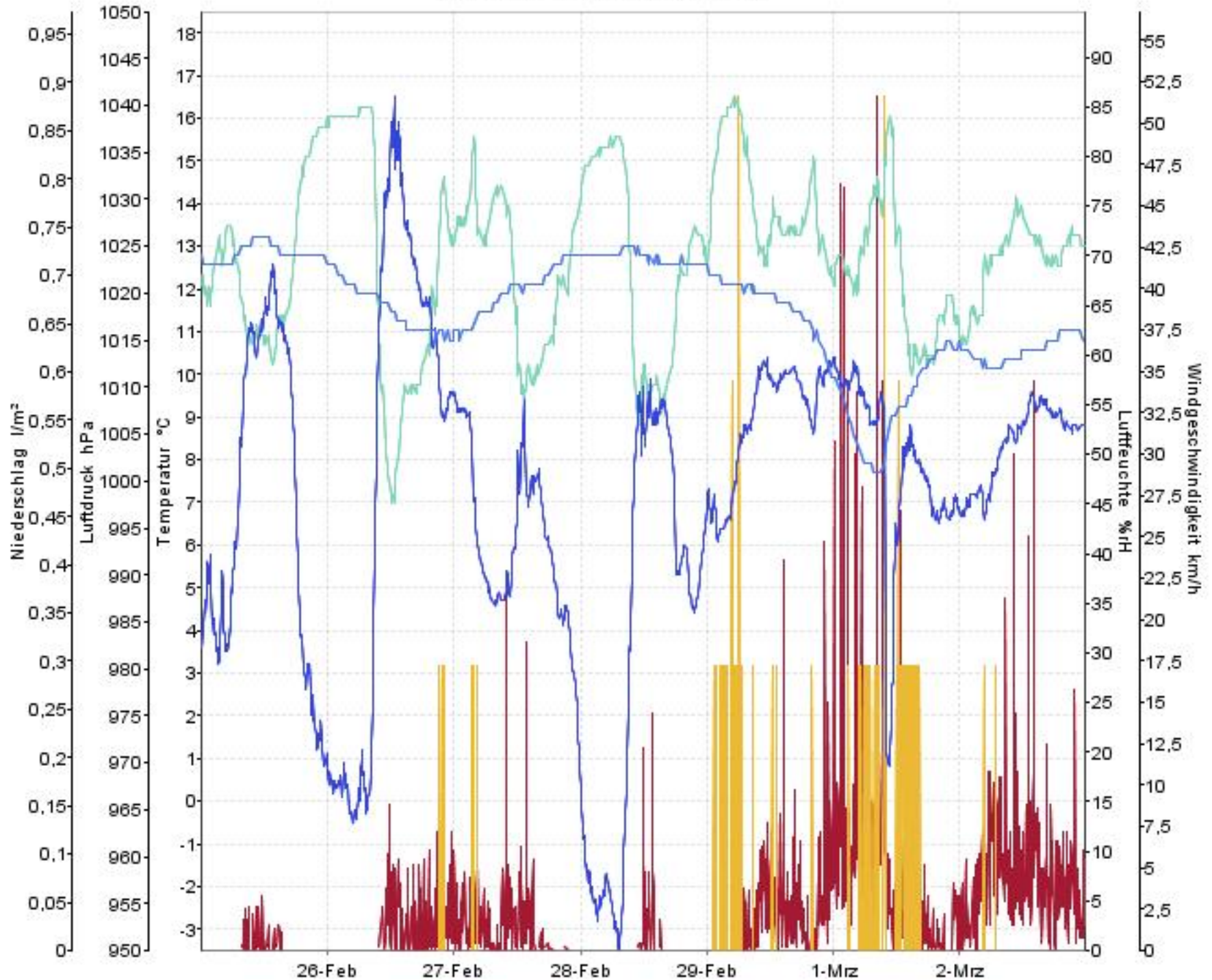


Wetterverlauf

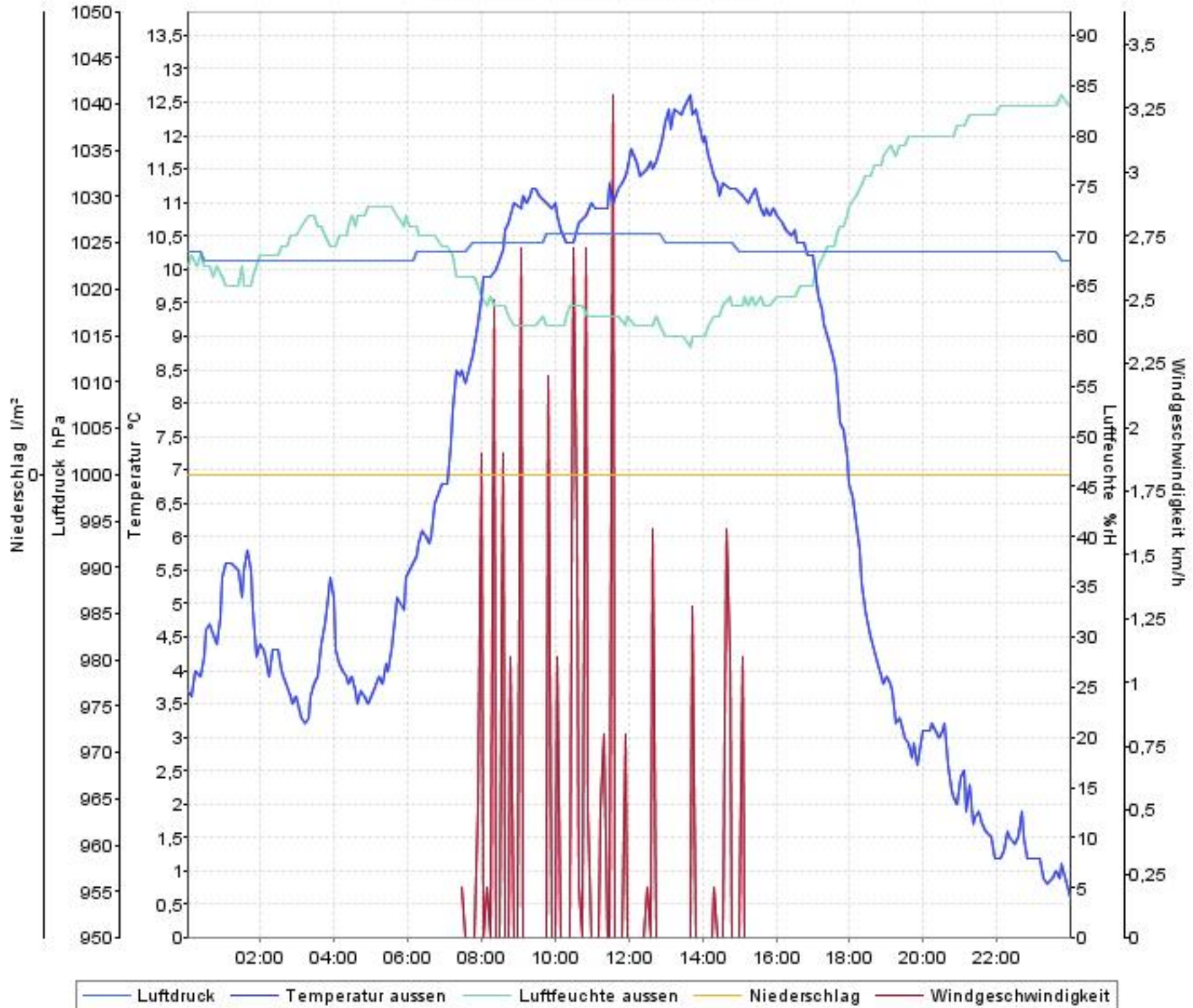
25.02.08 00:04 - 02.03.08 23:58



— Luftdruck — Temperatur aussen — Luftfeuchte aussen — Niederschlag — Windgeschwindigkeit

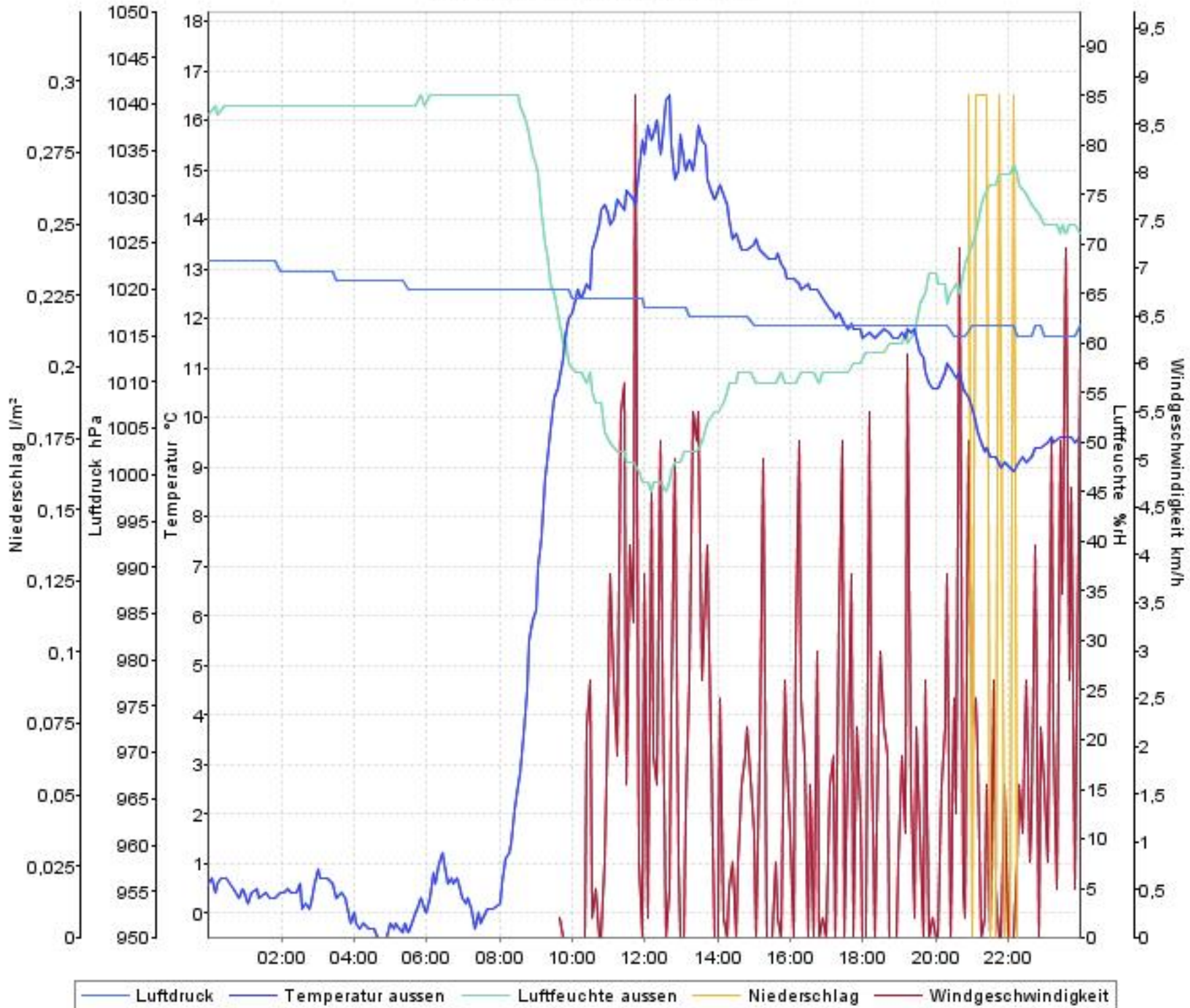
Wetterverlauf

25.02.08 00:04 - 26.02.08 00:00



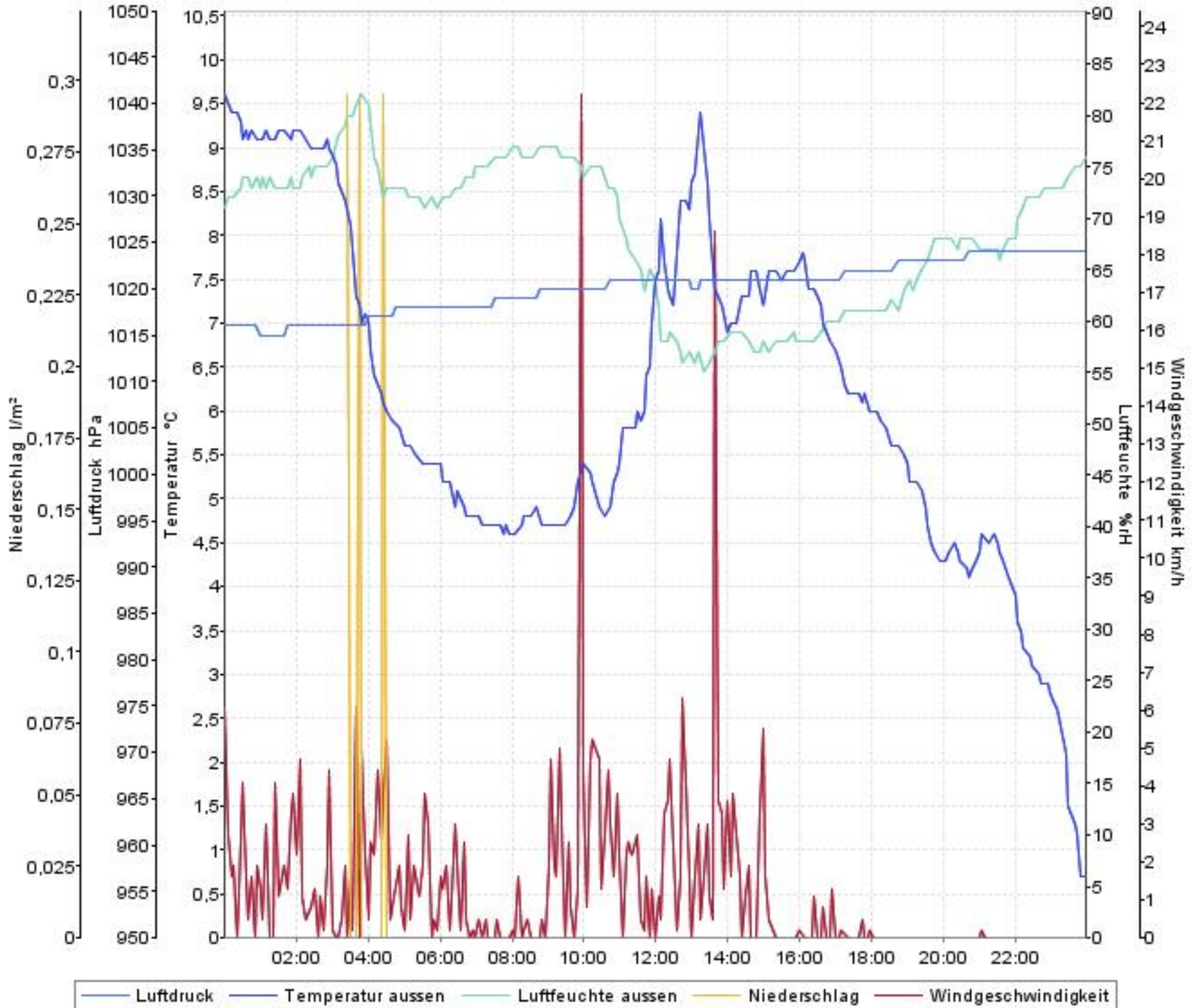
Wetterverlauf

26.02.08 00:00 - 27.02.08 00:00



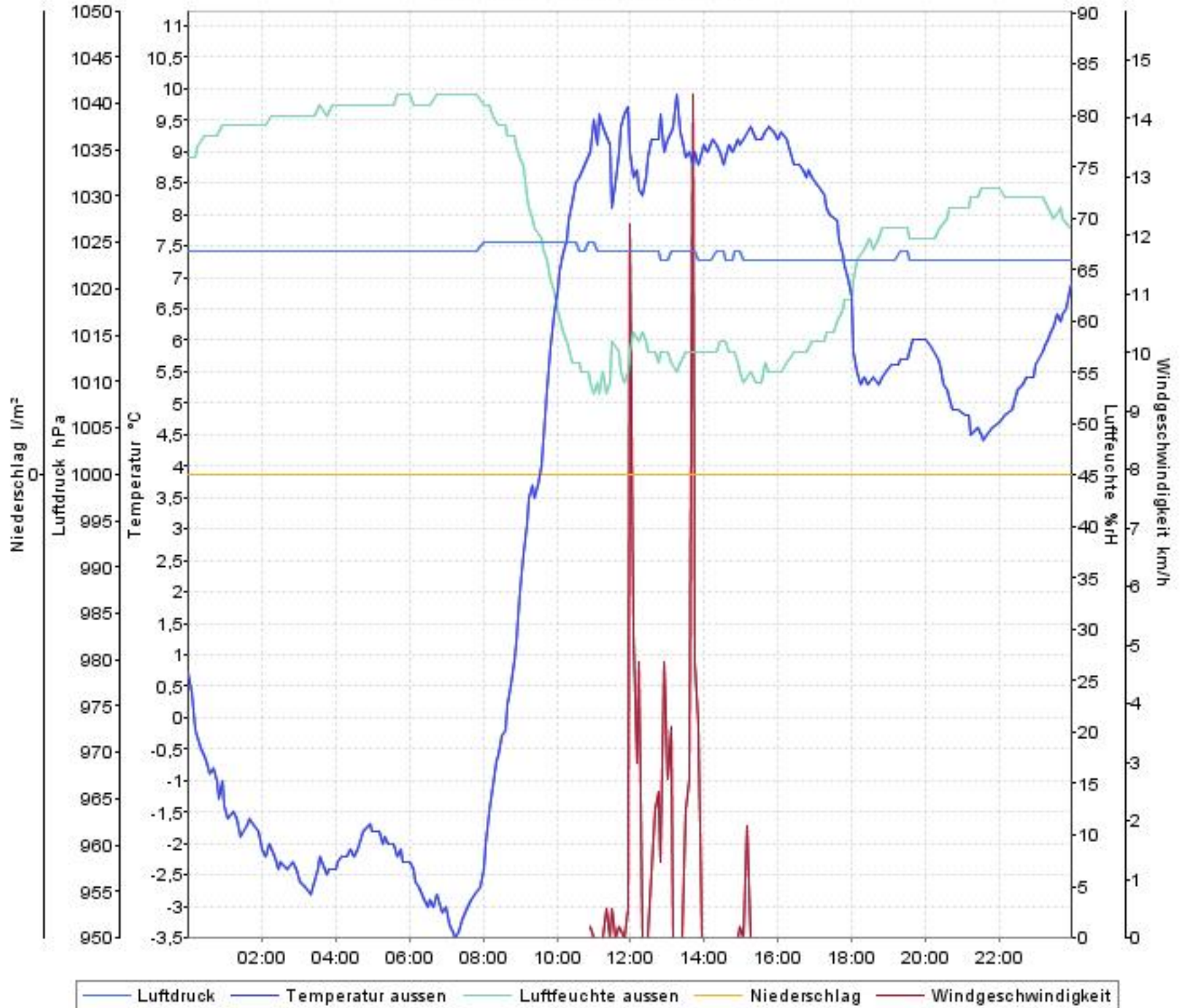
Wetterverlauf

27.02.08 00:00 - 28.02.08 00:00



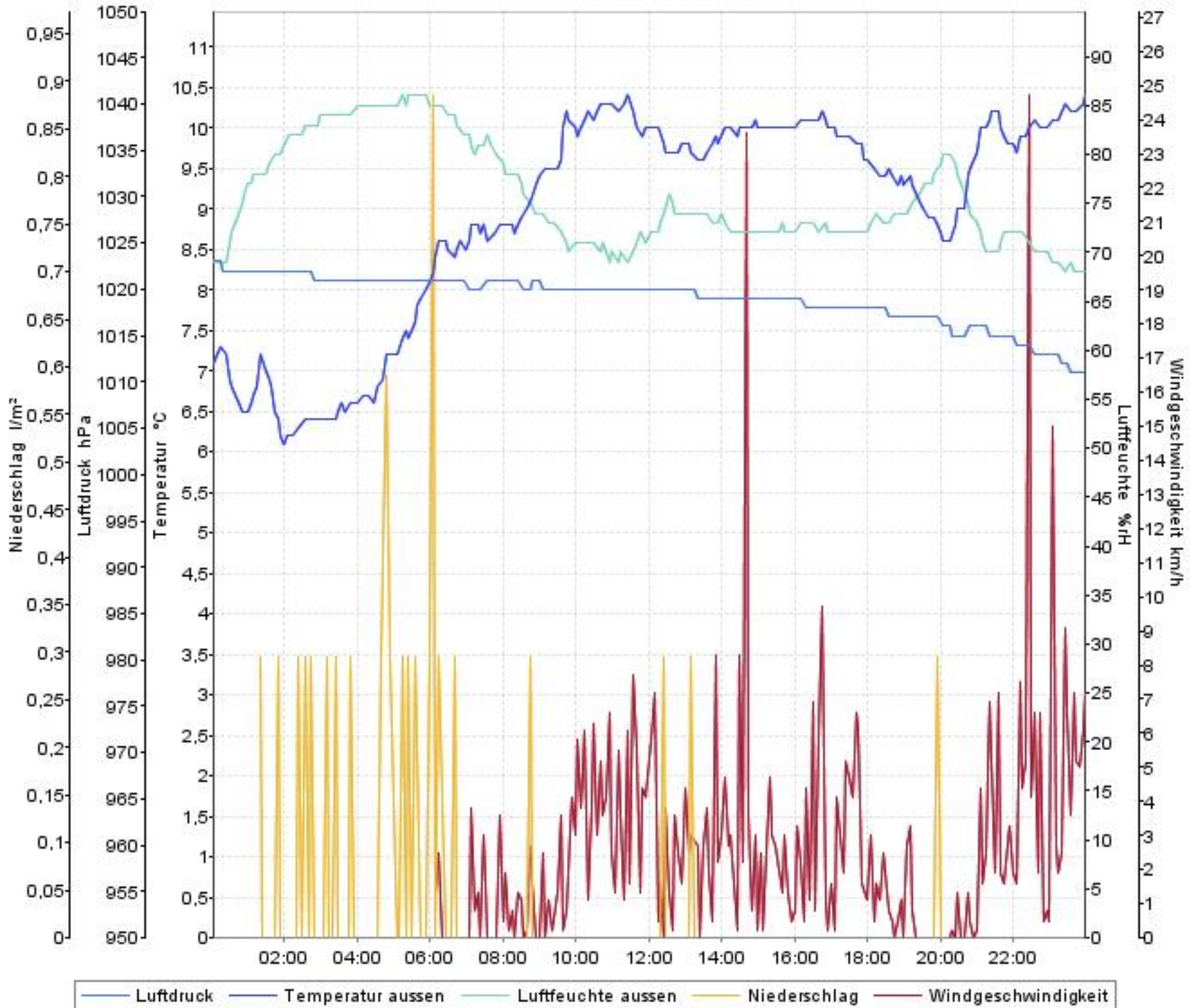
Wetterverlauf

28.02.08 00:00 - 28.02.08 23:59



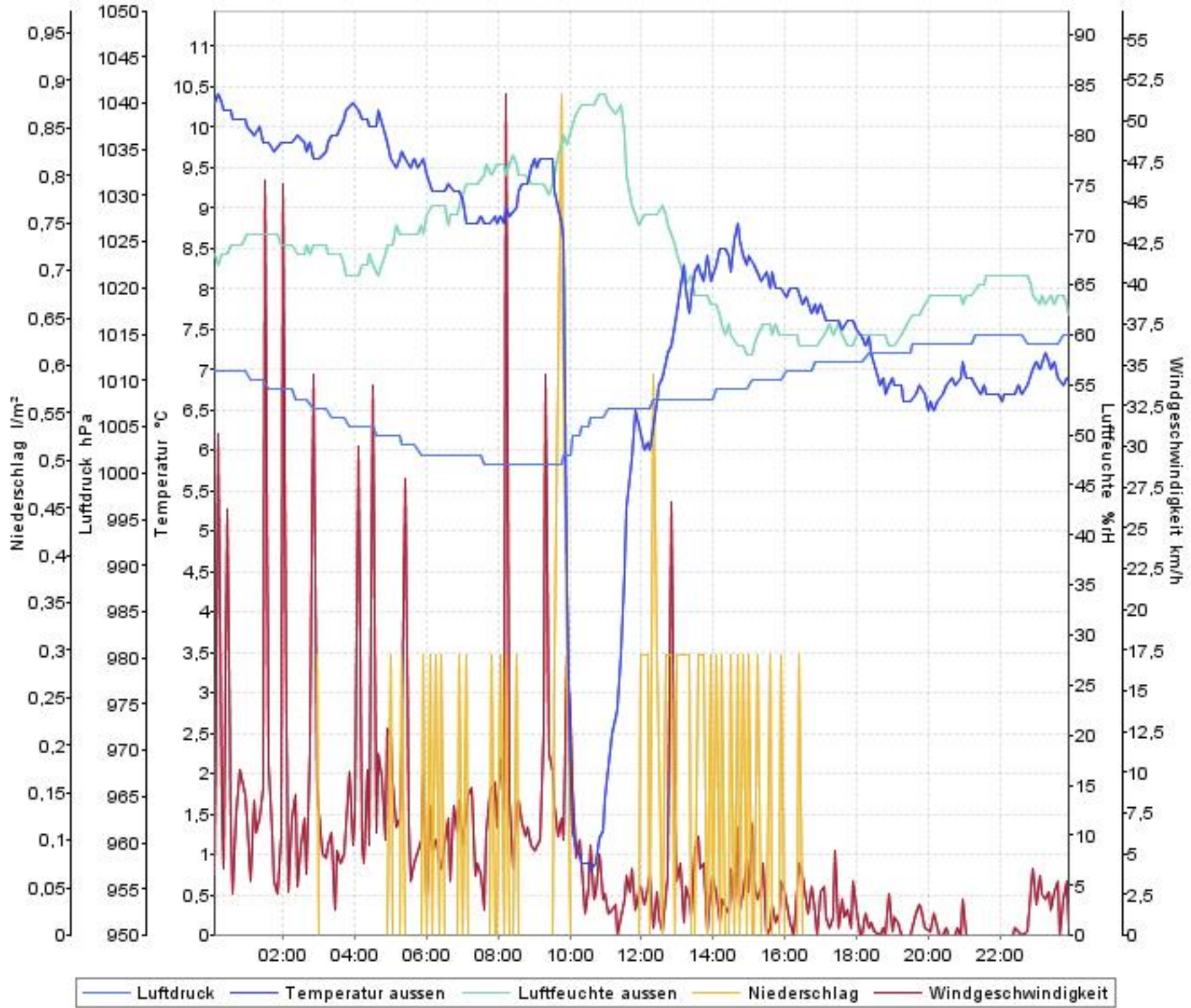
Wetterverlauf

29.02.08 00:05 - 29.02.08 23:59



Wetterverlauf

01.03.08 00:05 - 01.03.08 23:57



Wetterverlauf

02.03.08 00:02 - 02.03.08 23:58

