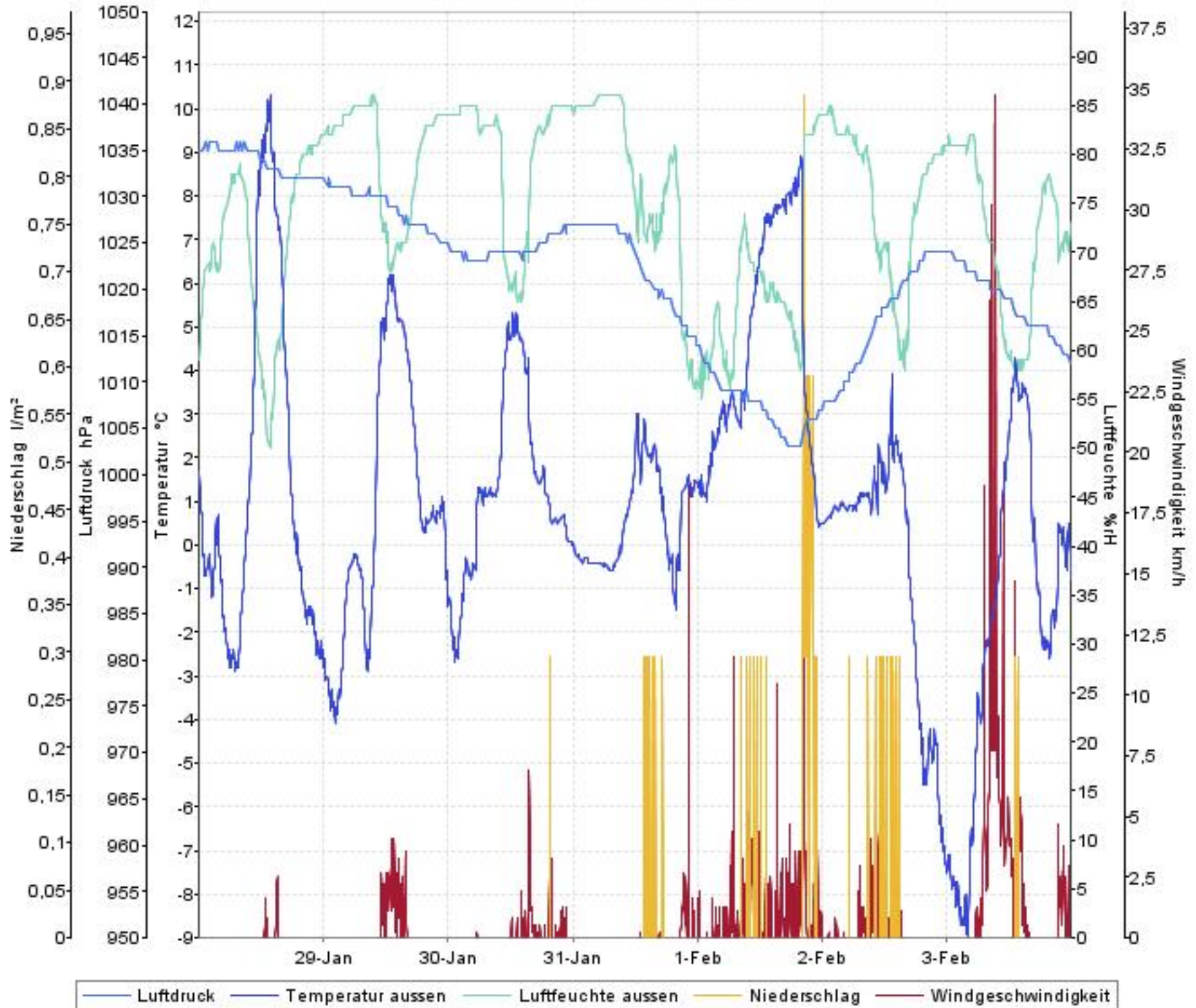


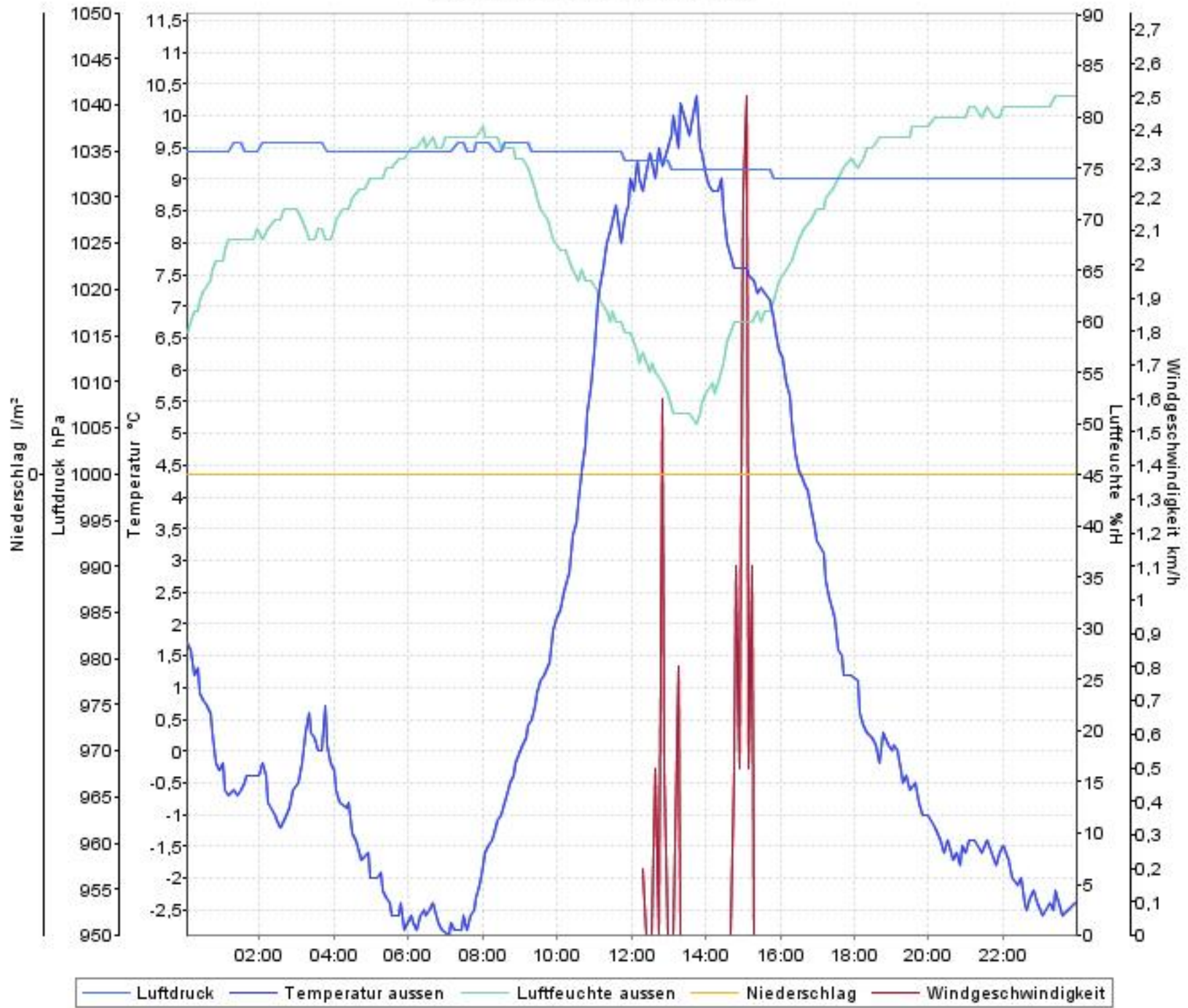
Wetterverlauf

28.01.08 00:04 - 03.02.08 23:59



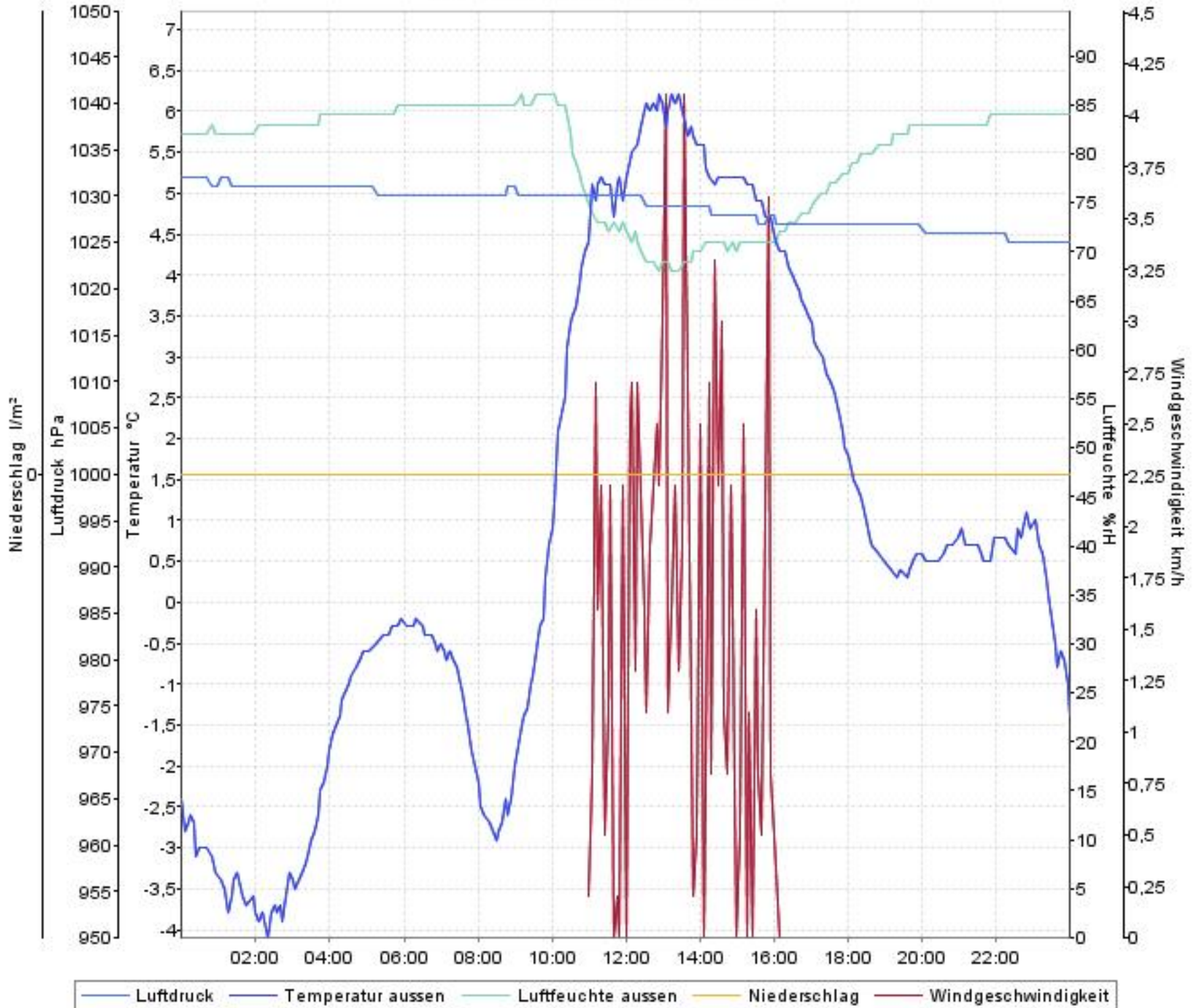
Wetterverlauf

28.01.08 00:04 - 29.01.08 00:00



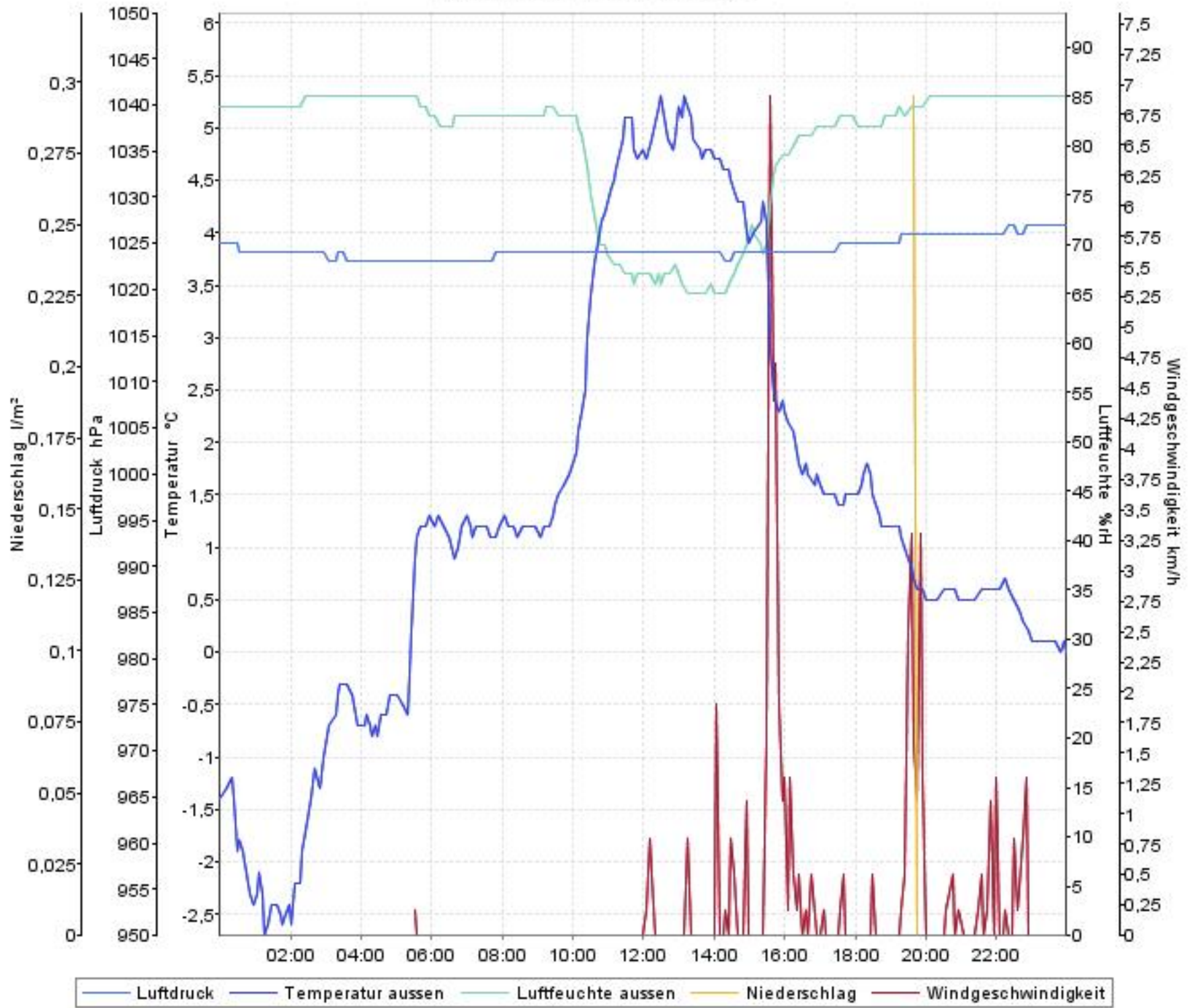
Wetterverlauf

29.01.08 00:00 - 30.01.08 00:00



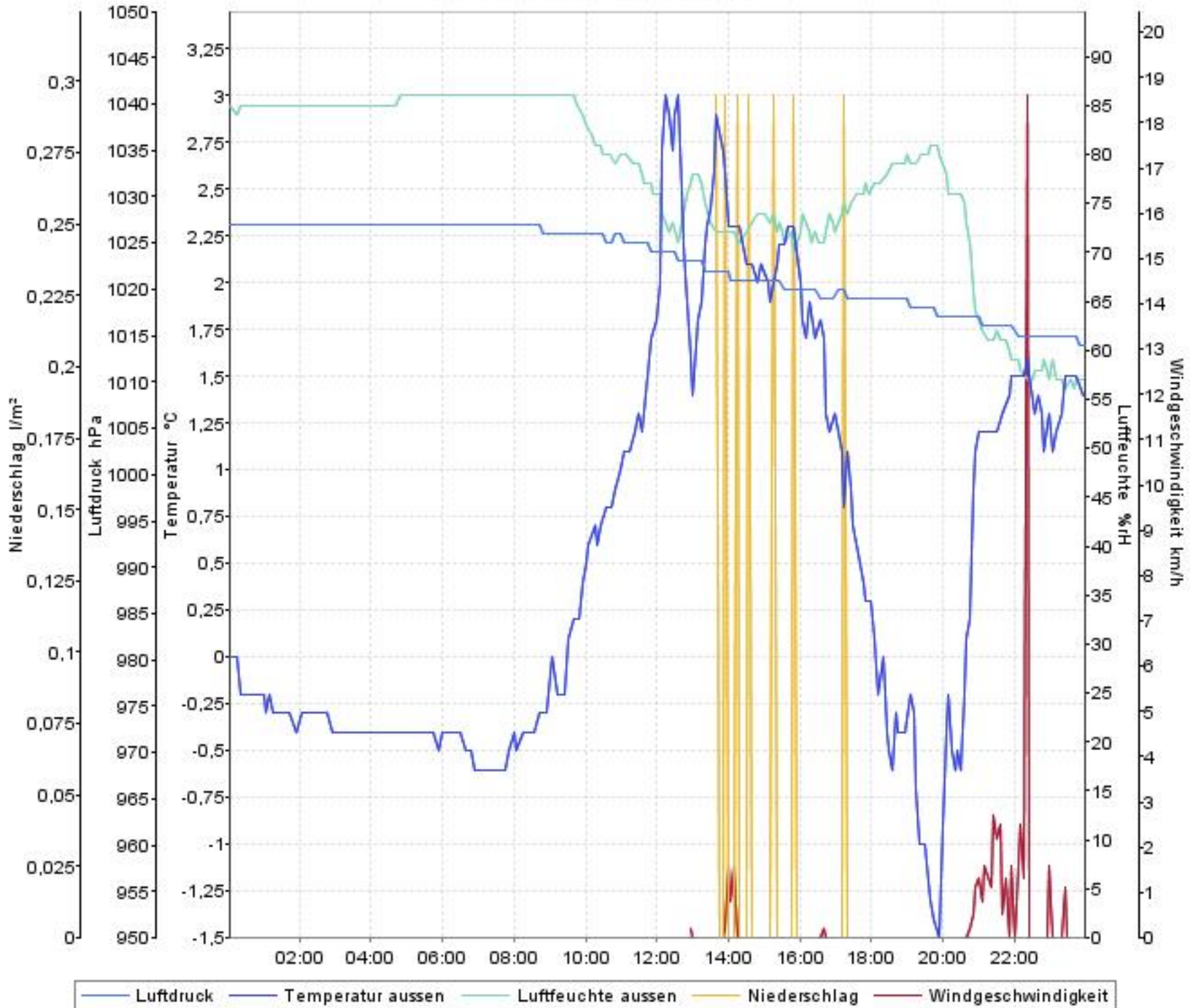
Wetterverlauf

30.01.08 00:00 - 30.01.08 23:59



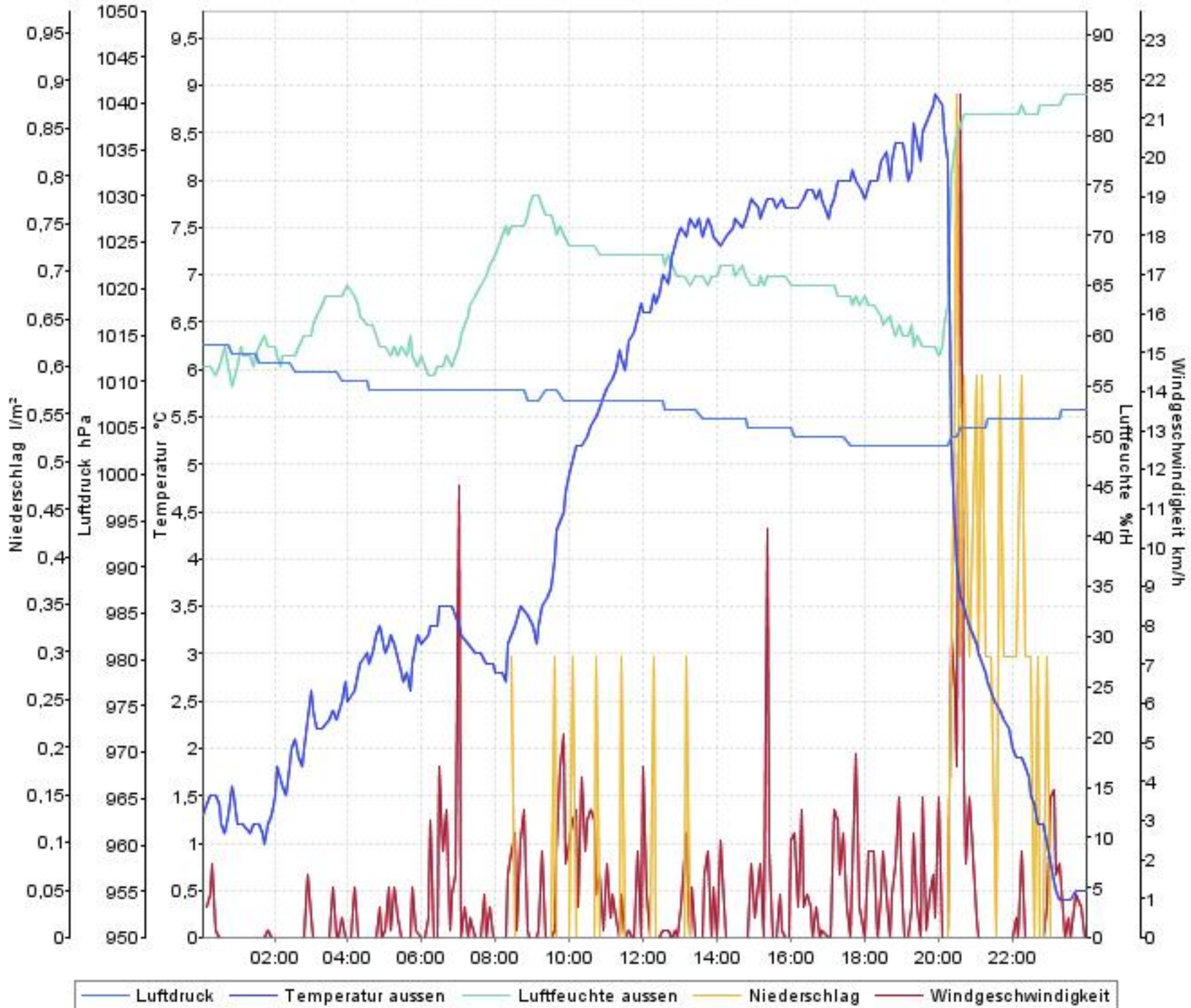
Wetterverlauf

31.01.08 00:04 - 31.01.08 23:59



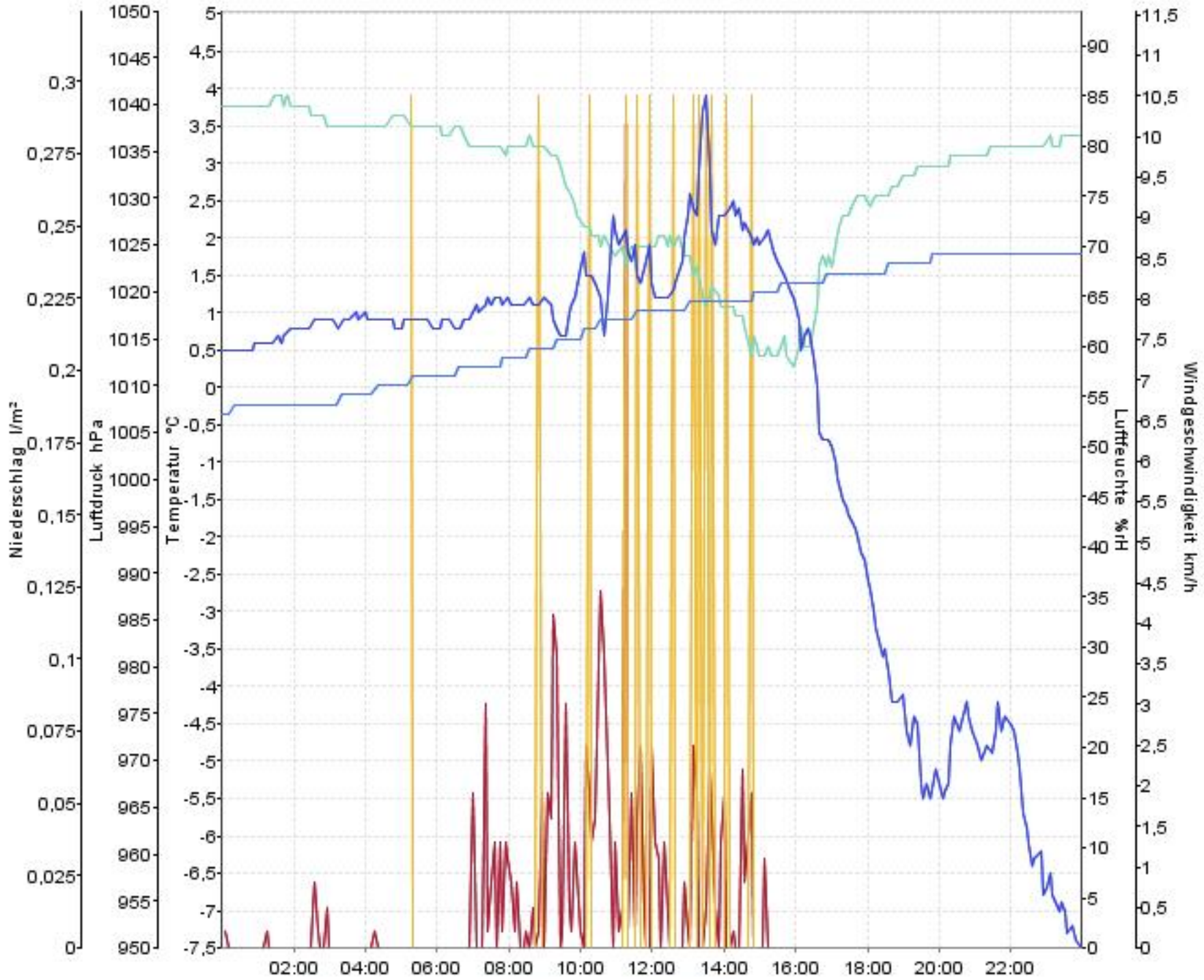
Wetterverlauf

01.02.08 00:05 - 02.02.08 00:00



Wetterverlauf

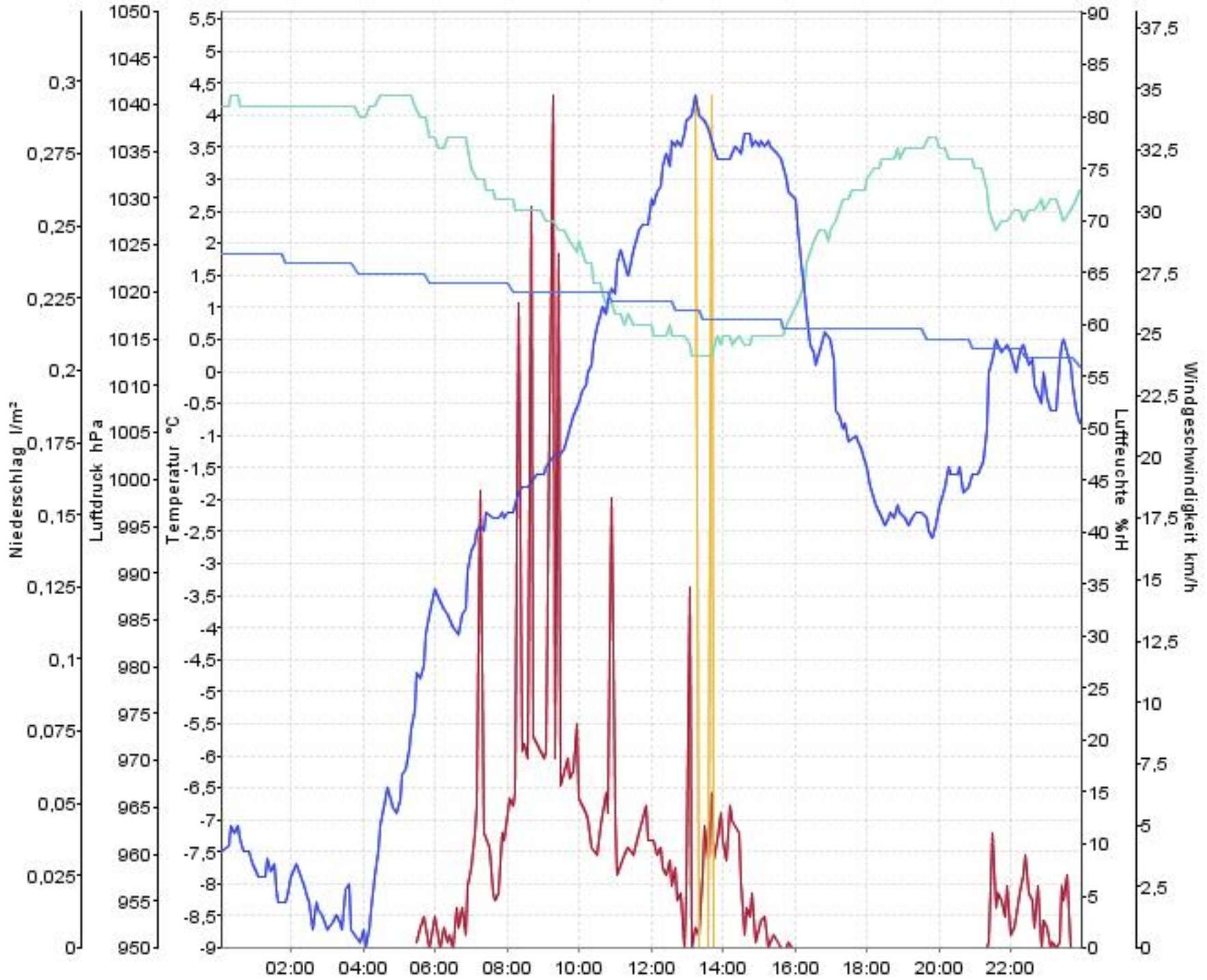
02.02.08 00:00 - 02.02.08 23:59



— Luftdruck — Temperatur aussen — Luftfeuchte aussen — Niederschlag — Windgeschwindigkeit

Wetterverlauf

03.02.08 00:04 - 03.02.08 23:59



— Luftdruck — Temperatur aussen — Luftfeuchte aussen — Niederschlag — Windgeschwindigkeit