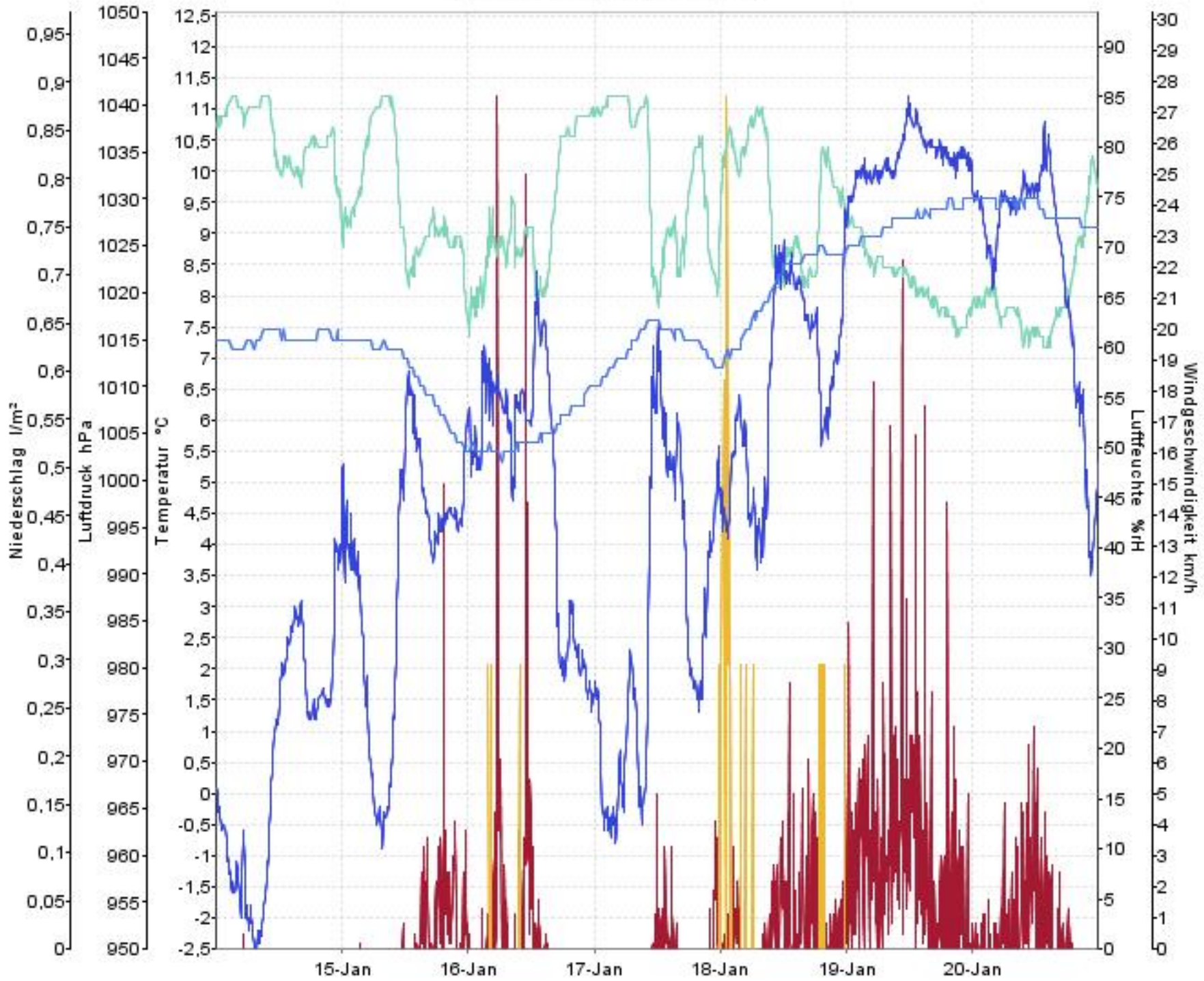


Wetterverlauf

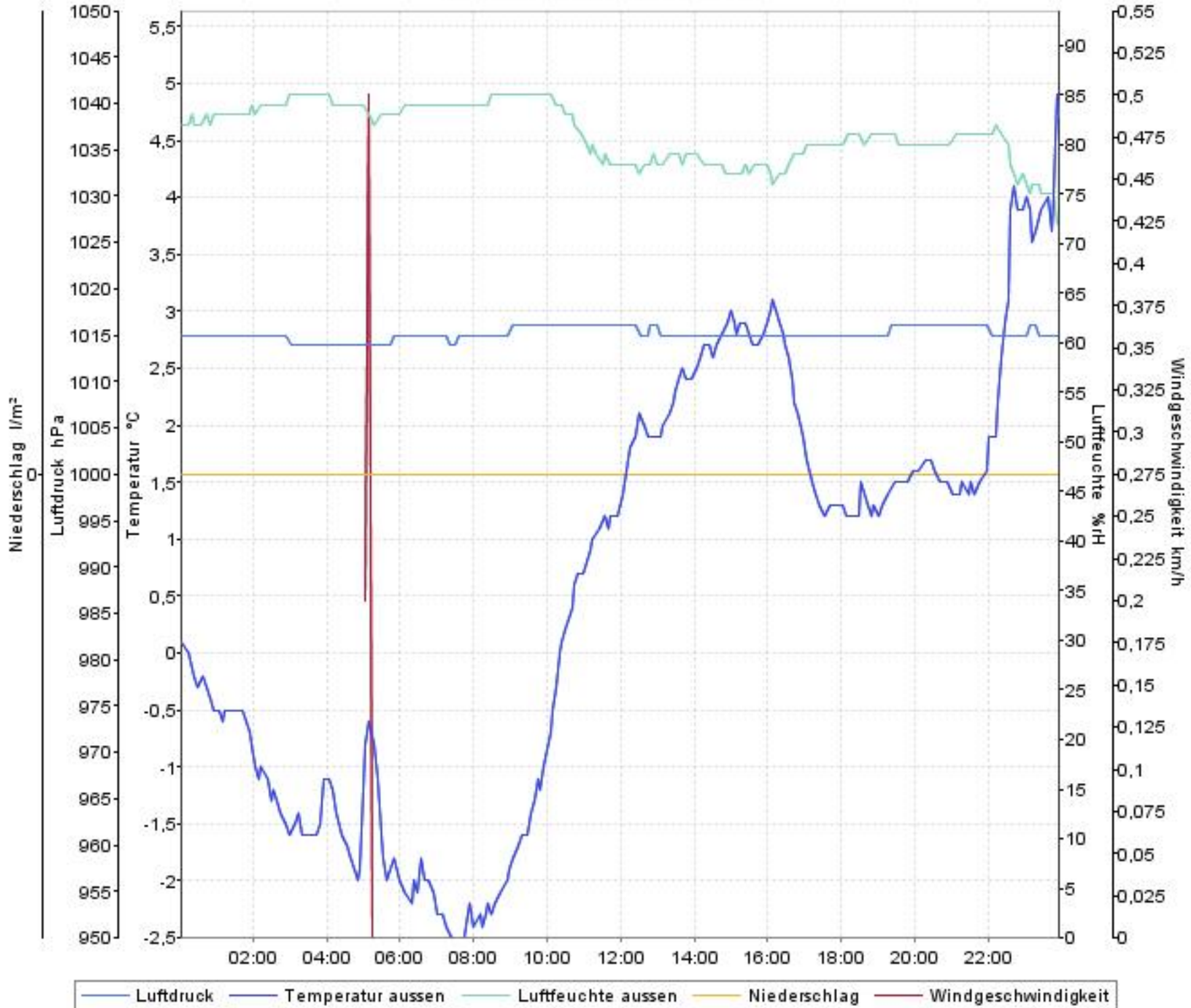
14.01.08 00:04 - 20.01.08 23:57



— Luftdruck — Temperatur aussen — Luftfeuchte aussen — Niederschlag — Windgeschwindigkeit

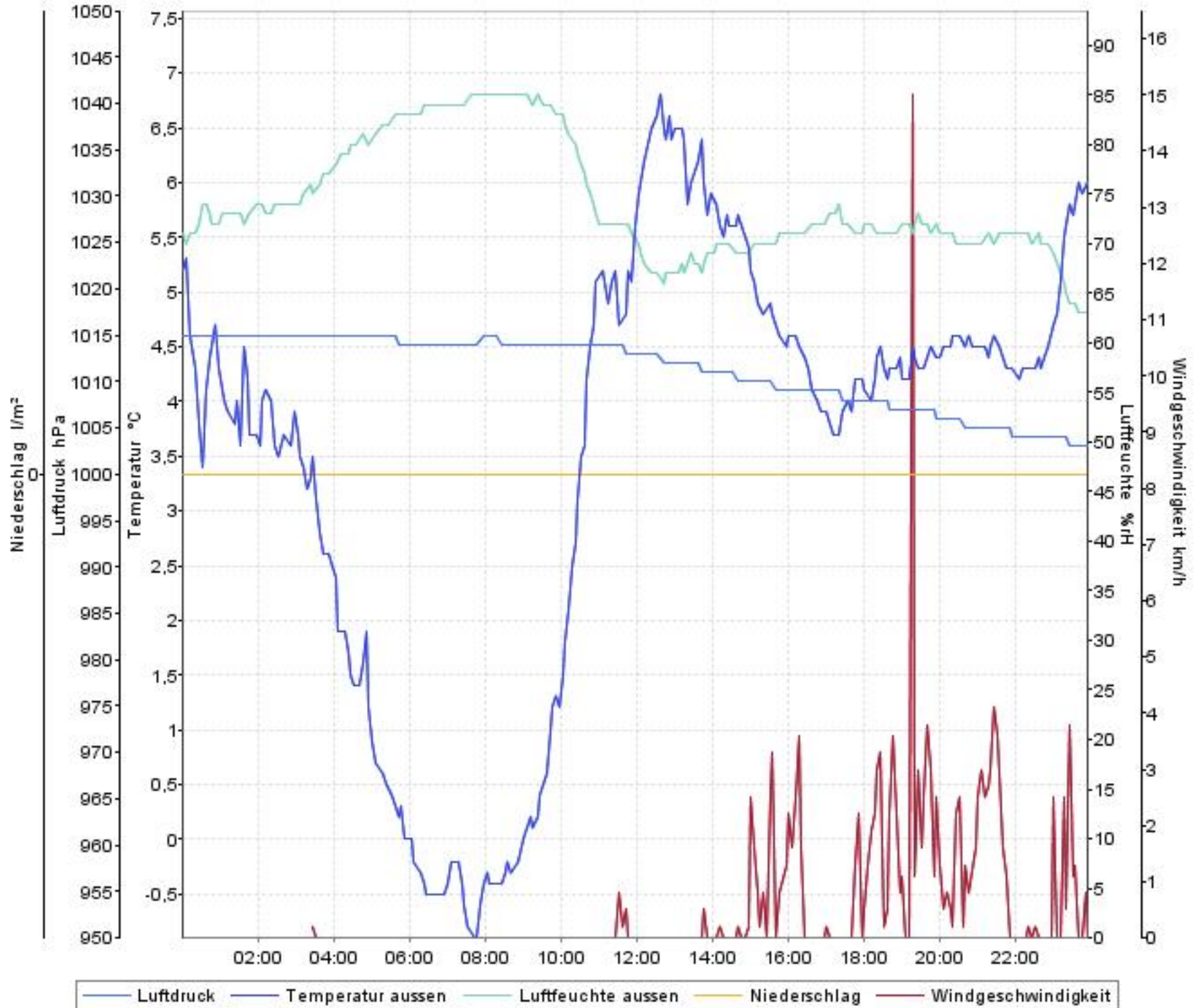
Wetterverlauf

14.01.08 00:04 - 14.01.08 23:56



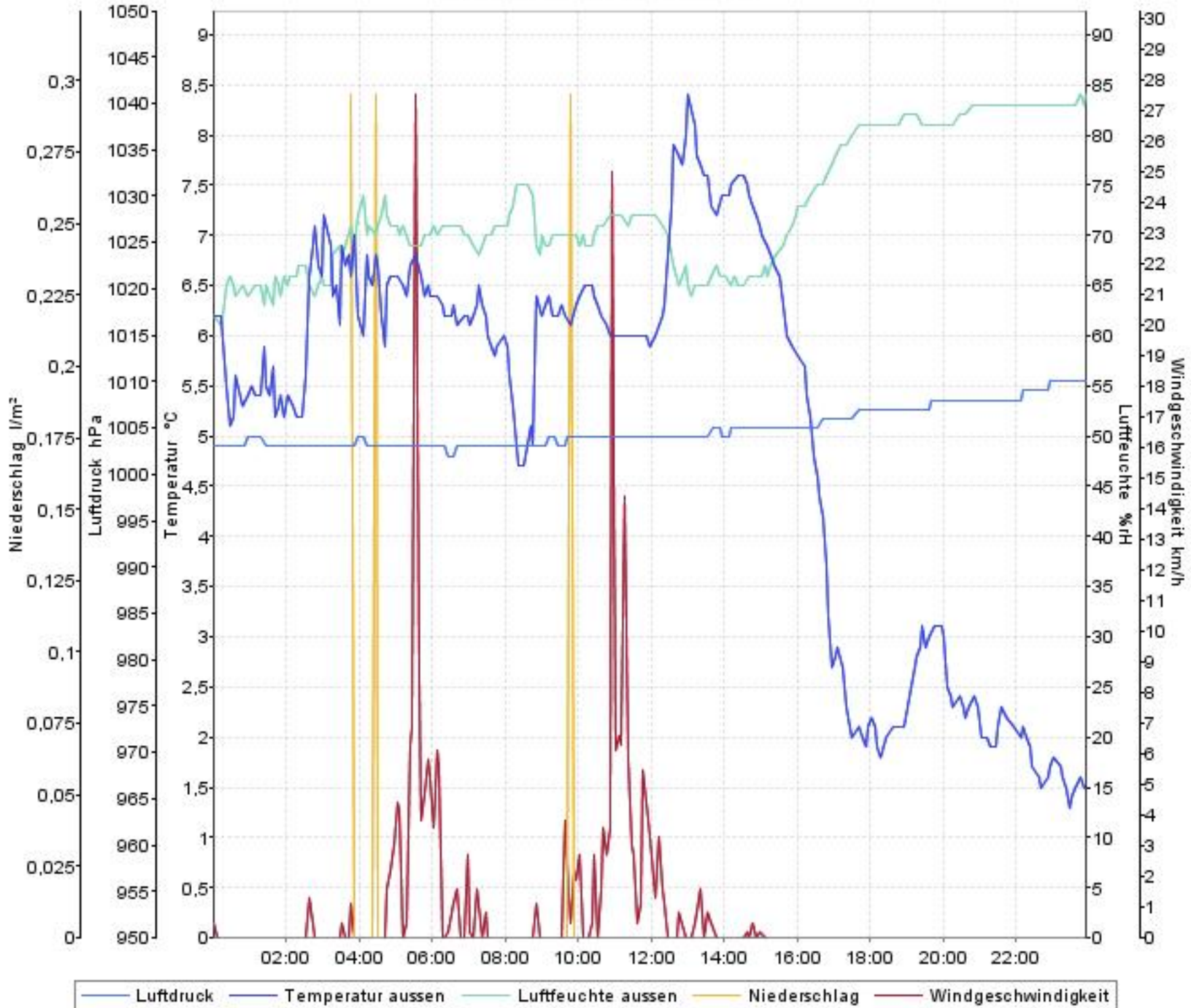
Wetterverlauf

15.01.08 00:01 - 15.01.08 23:56



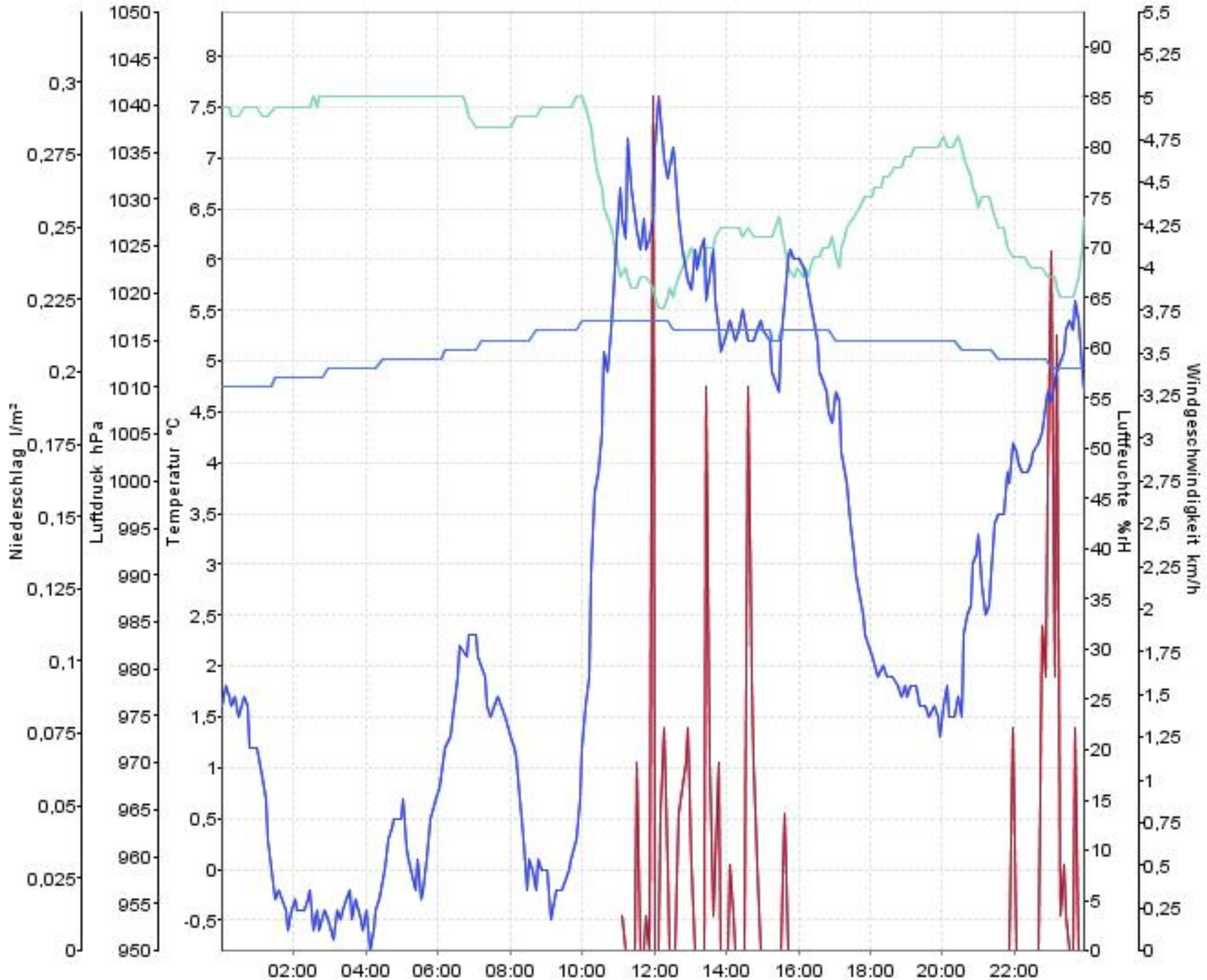
Wetterverlauf

16.01.08 00:01 - 16.01.08 23:56



Wetterverlauf

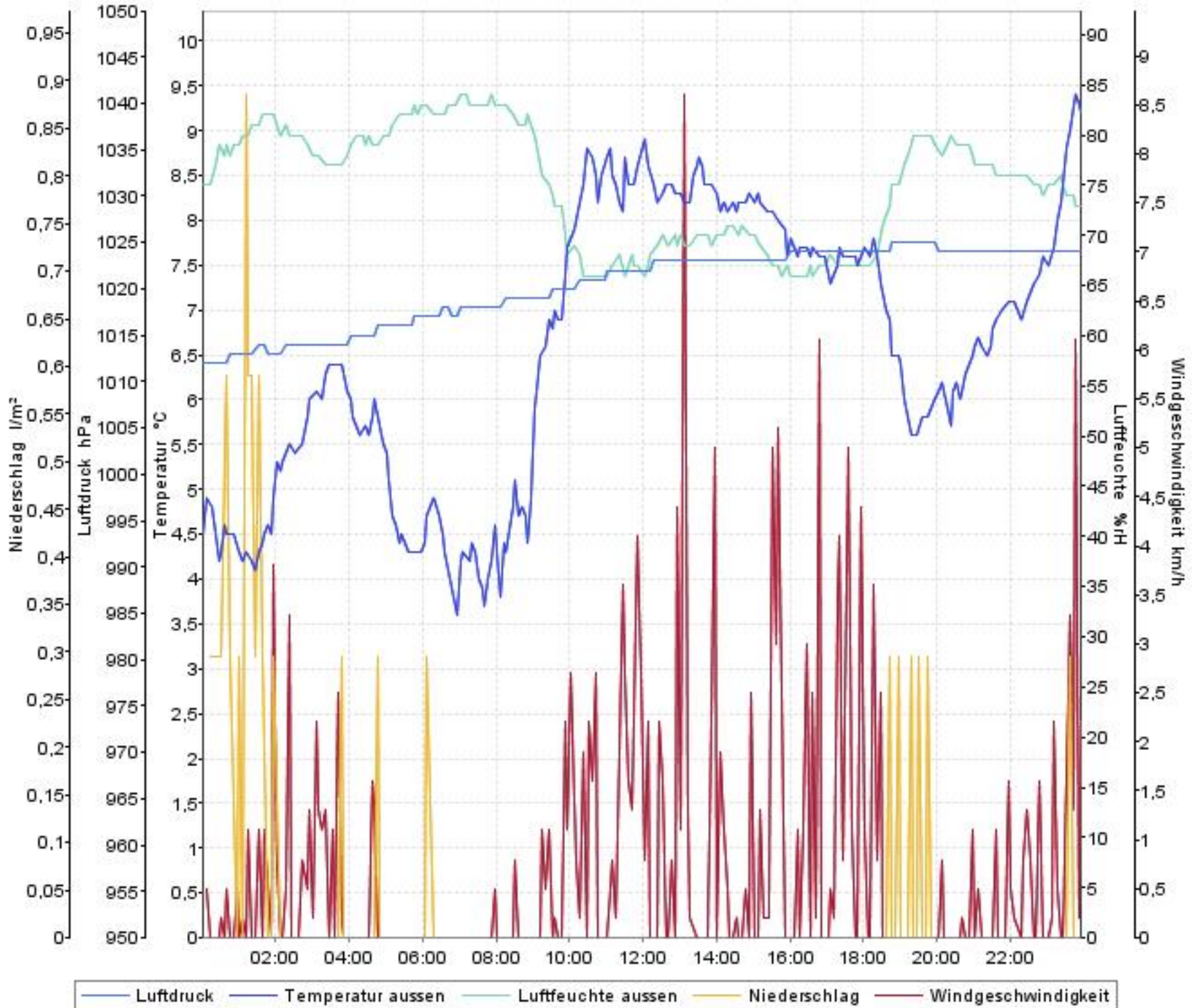
17.01.08 00:01 - 17.01.08 23:57



— Luftdruck — Temperatur aussen — Luftfeuchte aussen — Niederschlag — Windgeschwindigkeit

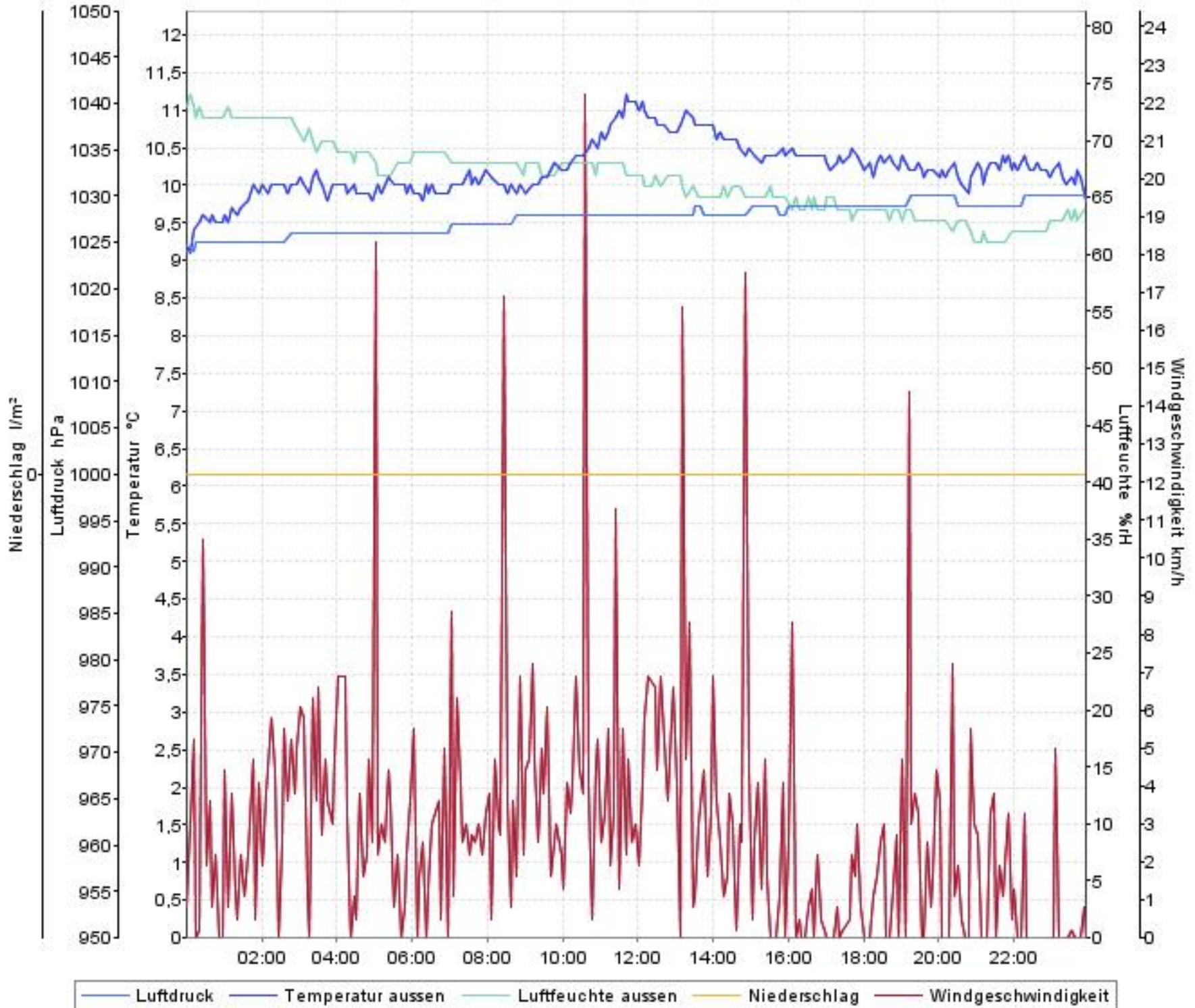
Wetterverlauf

18.01.08 00:02 - 18.01.08 23:56



Wetterverlauf

19.01.08 00:01 - 19.01.08 23:56



Wetterverlauf

20.01.08 00:01 - 20.01.08 23:57

